

RED CARPET

*Chopard*

*Chopard*



RED  
CARPET

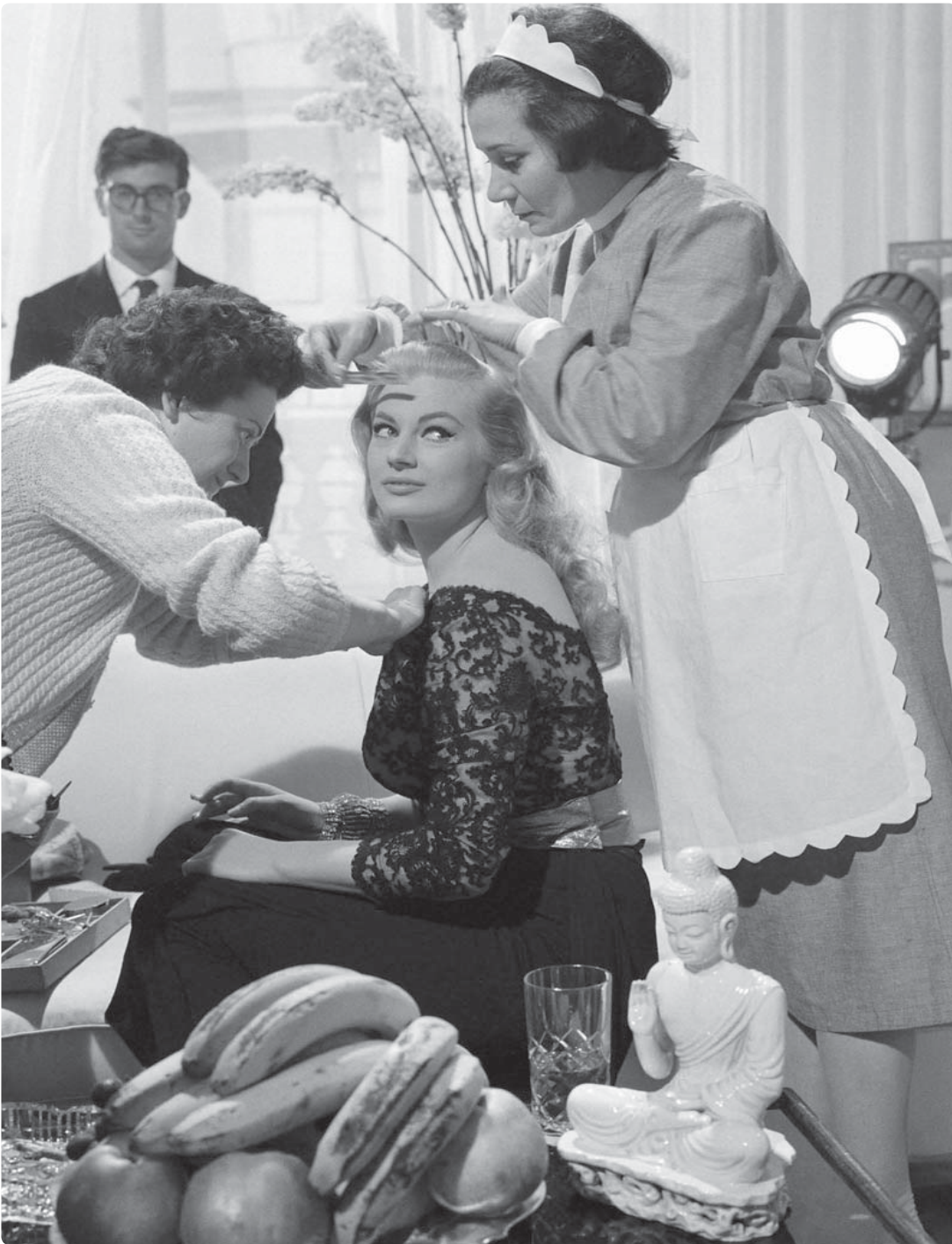


# BACK STAGE

at  
Cinecittà

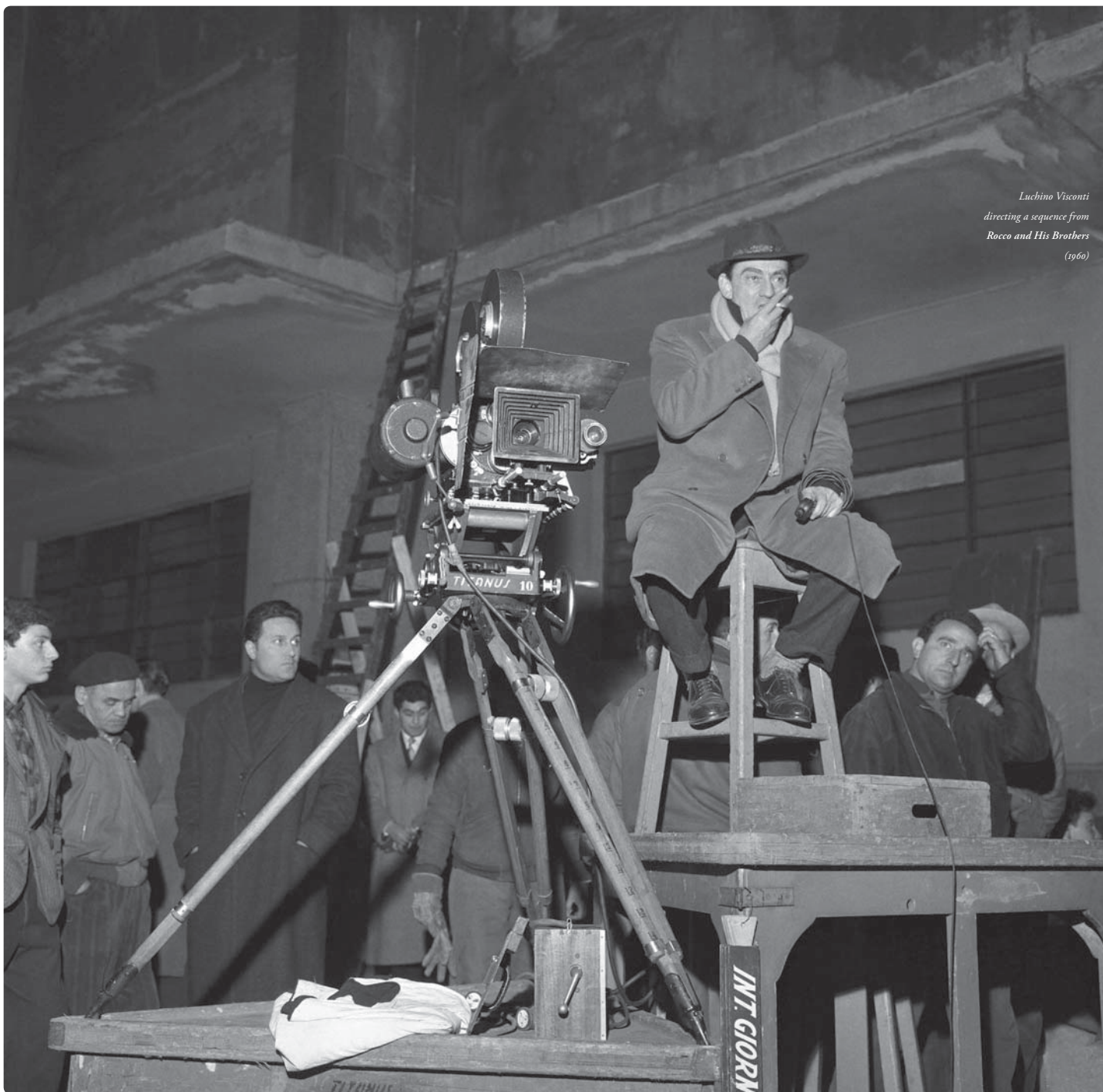
*Anita Ekberg  
during the filming of  
La Dolce Vita (1960)*

The perfect story that connects Chopard and the Cannes International Film Festival has been unfolding since 1998, the year that the jewellery and watchmaking house became an official partner for the world's most famous cinematographic event. In 2007, on the occasion of the 60<sup>th</sup> anniversary of the Festival, Caroline Scheufele, Chopard's Co-President and Artistic Director, launched an original High Jewellery collection to enhance the beauty of the actresses seen on the Croisette and of course on the famous red carpet: the "Red Carpet Collection".



Since then, every spring the famous red carpet of the Palais des Festivals steps is the stage for stunning High Jewellery creations. These exceptional pieces are the result of an extraordinary challenge because they are equal in number to the anniversary year of the Cannes event. Thus for the 67<sup>th</sup> Festival, 67 creations will be unveiled.

*Luchino Visconti  
directing a sequence from  
Rocco and His Brothers  
(1960)*





Designed and patiently crafted by expert artisans using time-honoured techniques and cutting-edge technologies, they are a testimony to Chopard's remarkable skills in High Jewellery. They make up a varied collection, with pieces that will adorn the most diverse personalities of all the famous actresses.

*Charlton Heston  
with Stephen Boyd in their  
**Ben Hur** costumes (1959)*





*Ava Gardner tries out  
costumes on the set of  
**The Barefoot Contessa**  
(1954)*

True to its passion for cinema, this year Chopard wanted to revive the magic of Cinecittà by paying tribute to the mythic stars of the Italian studios. Thus, the 2014 Red Carpet collection draws inspiration from the sensuality and glamour of fifties and sixties film icons.





*Ingrid Bergman and  
Roberto Rossellini  
commenting on the script of  
Journey to Italy (1953)*



The centrepiece of this new edition, the "Riviera" set, composed of a necklace and matching earrings, celebrates diamonds in their most harmonious forms. Brilliant-cut, marquise and pear-shaped diamonds mingle in a lush caress of foliage.

*Fernandel  
on the set of  
Don Camillo  
(1952)*



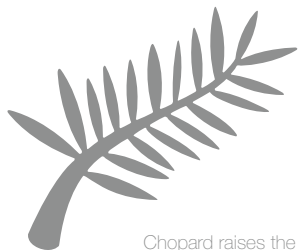


*Federico Fellini  
takes a break while filming  
La Dolce Vita (1960)*

In connection with the High Jewellery collection, a photography exhibition entitled "Backstage at Cinecittà" penetrates behind the scenes of the legendary studios in Rome. Fleeting moments captured on film, or formal portraits taken off set, the selected images reveal the inimitable elegance and seductiveness of the celebrities of the sixties. They also express the light-heartedness and creative genius of the times. In a few shots, the "dream factory" or the "city of divas", as Fellini used to say, is reborn to the delight of cinephiles and anyone who is nostalgic for the "Dolce Vita" era. A gallery of memories to admire on the Chopard Rooftop during the Festival fortnight.



Another crowning moment of the 67<sup>th</sup> Festival de Cannes and the ultimate symbol of the exceptional relationship that connects the Swiss jeweller with the Cannes event, the presentation of a uniquely brilliant Palme d'or. This year, the mythic «jewel», which has been hand-crafted in the Chopard workshops since 1998, will for the first time be made of gold that is certified «Fairmined», in other words, mined fairly in strict compliance with the rules of economic, social and environmental development. This innovation is in line with practices introduced by Chopard at the 66<sup>th</sup> Festival de Cannes, aiming to promote the rise of sustainable development in the luxury sector. By enhancing the precious trophy with environmentally responsible qualities, Chopard gives it a new prestige: now the iconic award represents both the best of cinematographic production and the best of the goldsmith's art.



Follow Chopard in Cannes

Chopard raises the curtain on its tumblr platform  
and invites you to follow its footsteps on the Red Carpet.

See you at [chopardredcarpet.tumblr.com](http://chopardredcarpet.tumblr.com)









AN EXQUISITE PAIR  
OF DIAMOND EARRINGS

Of openwork lace design  
with scintillating delicate  
diamond-set floral motifs.

[849538-1001]

01



A DELICATE SAPPHIRE  
AND DIAMOND SET

Necklace designed as a fine undulating line  
of alternating pear-shaped sapphire and diamond clusters.  
Bracelet, earrings and ring en suite.

[859180-1001] [849180-1005] [829180-1010]

[819180-1004]





[849303-1003]

03



[849303-5001]

04



[849303-1004]

05

### THREE GORGEOUS PAIRS OF DIAMOND AND GEM-SET EARRINGS

Each pair set with pear-shaped tanzanites,  
rubellites or kunzites to the diamond-set  
openwork braided motifs with gem-set surmounts.



# A STYLISH CHALCEDONY AND DIAMOND SET

Sautoir designed as an oval-shaped chalcedony within  
a rose-cut diamond surround suspending a similarly set tassel,  
to the chalcedony bead and diamond necklace. Ring en suite.

[829610-3001]

06



[819610-1001]



AN ENCHANTING SAPPHIRE  
AND DIAMOND NECKLACE

Designed as a flight of fluttering sapphire and  
diamond butterflies, to the delicate pear-shaped  
sapphire necklace.

[819533-1002]





TWO FABULOUS PAIRS  
OF FEATHER EARRINGS

Each pair designed as two peacock feathers,  
one in vibrant gemstones of amethyst, tanzanite & sapphire,  
the other purely in scintillating white diamonds.

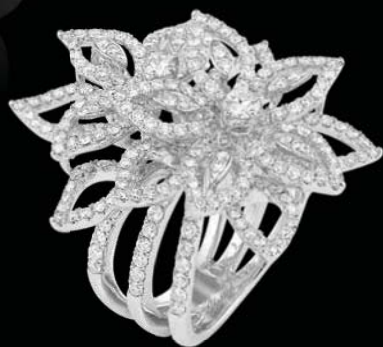
[849505-9001]

08



[849505-1002]

09



#### A DAINTY DIAMOND SET

Necklace designed as an openwork  
garland of delicate diamond-set flowers.  
Earrings and ring en suite.

[939607-1001]



# A LOVELY LADY'S DIAMOND WATCH

The circular pavé-set diamond dial set within a meadow of shimmering diamond flowers to the white silk bracelet.

[134330-1002]

11



# AN ELEGANT PAIR OF DIAMOND EARRINGS

Each hoop set with a series of scintillating diamond-set floral motifs.

[849381-1001]

12





AN IMPRESSIVE EMERALD  
AND DIAMOND NECKLACE

Designed as graduated lines of pear-shaped emeralds within  
pavé-set diamond surround, to the similarly set diamond spacers  
suspending an impressive emerald pendant of 16 carats.

[B19597-9001]



A DIVINE EMERALD  
AND DIAMOND BRACELET

Designed as a carpet of openwork diamond-set  
flowers each with a round-shaped emerald centre,  
delicately encircling the wrist.

[850318-9001]



TWO CHARMING PAIRS  
OF 'SITAR' EARRINGS

Each pair reminiscent of the curving  
lines of a sitar, set in colourful gemstones  
of amethyst and blue topaz.

[849588-1004]

15



[849588-1002]

16



A GLORIOUS MANDARINE  
GARNET 'SITAR' SET

Reminiscent of an Indian sunset, the necklace set with a luminous  
oval-shaped mandarin garnet weighing 50 carats to the fluted garnet  
and pavé-set diamond surround and necklace. Earrings en suite.

[849588-5001] [819588-5001]

17







A Dainty Pair  
of Diamond Earrings

Each designed as a 3 carat pear-shaped diamond set within a graduated surround of marquise and pear-shaped diamonds, to the similarly set surmount.

[849586-1001]

18



A Sumptuous  
Diamond Necklace

Of openwork design, set with graduated lines of scintillating pear-shaped diamonds to the round diamond spacers.

[819514-1001]

19



### A LOVELY RUBY AND DIAMOND NECKLACE

Designed as a garland of graduated ruby flowers  
to the tiny ruby and diamond buds.

[819578-1001]

20



### A RAVISHING RUBY RING

The oval-shaped Burmese unheated ruby  
weighing 11.15 carats, within a pavé-set pink diamond ribbon  
surround, to the similarly set band.

[820793-5001]

21







[849550-5001]

23

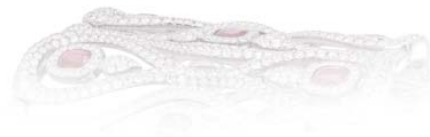


## AN OPULENT RUBELLITE AND DIAMOND SET

Like a glimpse into a Maharaja's court, the necklace designed as a fringe of briolette, marquise and pear-shaped rubellites with intricate pavé-set diamond arabesque detail. Bracelet and earrings en suite.

[819550-5001]

24



THREE EXQUISITE GEM-SET  
PLUME BRACELETS

Each of openwork design, the pavé-set diamond  
feathers with pink and blue sapphire or ruby detail,  
delicately encircling the wrist.

[859299-5001]

25

[859299-3001]

26

[859299-3002]

27





THREE STYLISH PAIRS  
OF GEM-SET EARRINGS

Each of stylised leaf design, set with cabochon  
marquise-shaped sapphires, emeralds or rubies to  
the fine pavé-set diamond lines and boarder.

[849587-1003]

28



[849587-1001]

29



[849587-1002]

30





AN ALLURING RUBELLITE  
AND DIAMOND NECKLACE

Designed as pavé-set diamond interlocking  
heart-shaped motifs, each holding  
a round rubellite in diamond surround.

[819595-5001]



[849340-5001] [829340-5001]



A FINE RUBELLITE  
AND DIAMOND 'BYZANTINE' SET

Necklace designed as an openwork pendant of diamond-set heart-shaped motifs suspending a pear-shaped rubellite, to the similarly set delicate fine link chain. Earrings and ring en suite.

[819340-5001]



AN EXTRAVAGANT  
RUBELLITE RING

The cushion-shaped rosy rubellite  
weighing 92.47 carats, to the lavish rose  
gold filigree surround and band.

[829526-5010]





[849519-5001]

34

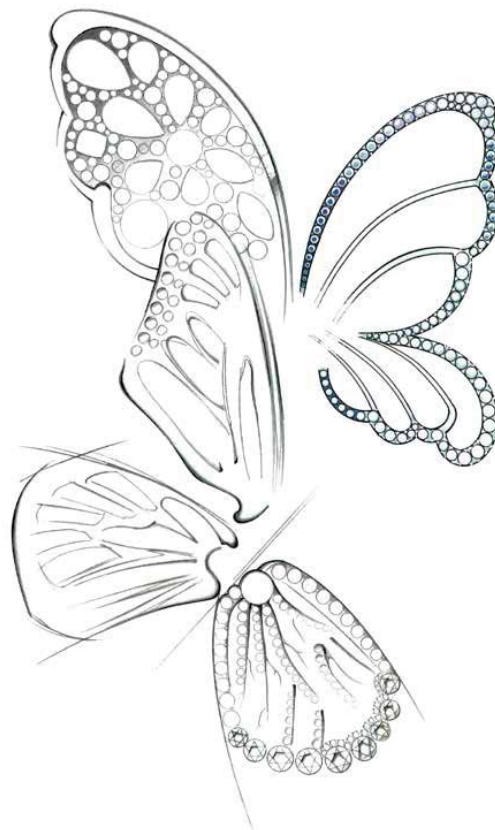


TWO SUBLIME PAIRS OF COLOURED  
SAPPHIRE EARRINGS

Reminiscent of shimmering chandeliers, set with  
swaying rainbow lines of delicate multi-coloured sapphire beads,  
to the openwork diamond set surmounts.

[849520-5001]

35





#### A CAPTIVATING BUTTERFLY SET

Necklace designed as an exquisite fancy coloured diamond butterfly, to the similarly set delicately fluttering wings and antennae. Ring en suite.

[819507-5001]





#### A MERRY MONKEY WATCH

The mischievous brown diamond monkey perched upon the gem-set vine bracelet with luscious sapphire berry detail, to the mother of pear dial within a tsavorite bezel.

[104447-5001]

A STYLISH COLOURED  
DIAMOND SAUTOIR

Designed as five rows of graduated brown  
diamond beads to the rose-cut diamond floral clasp.

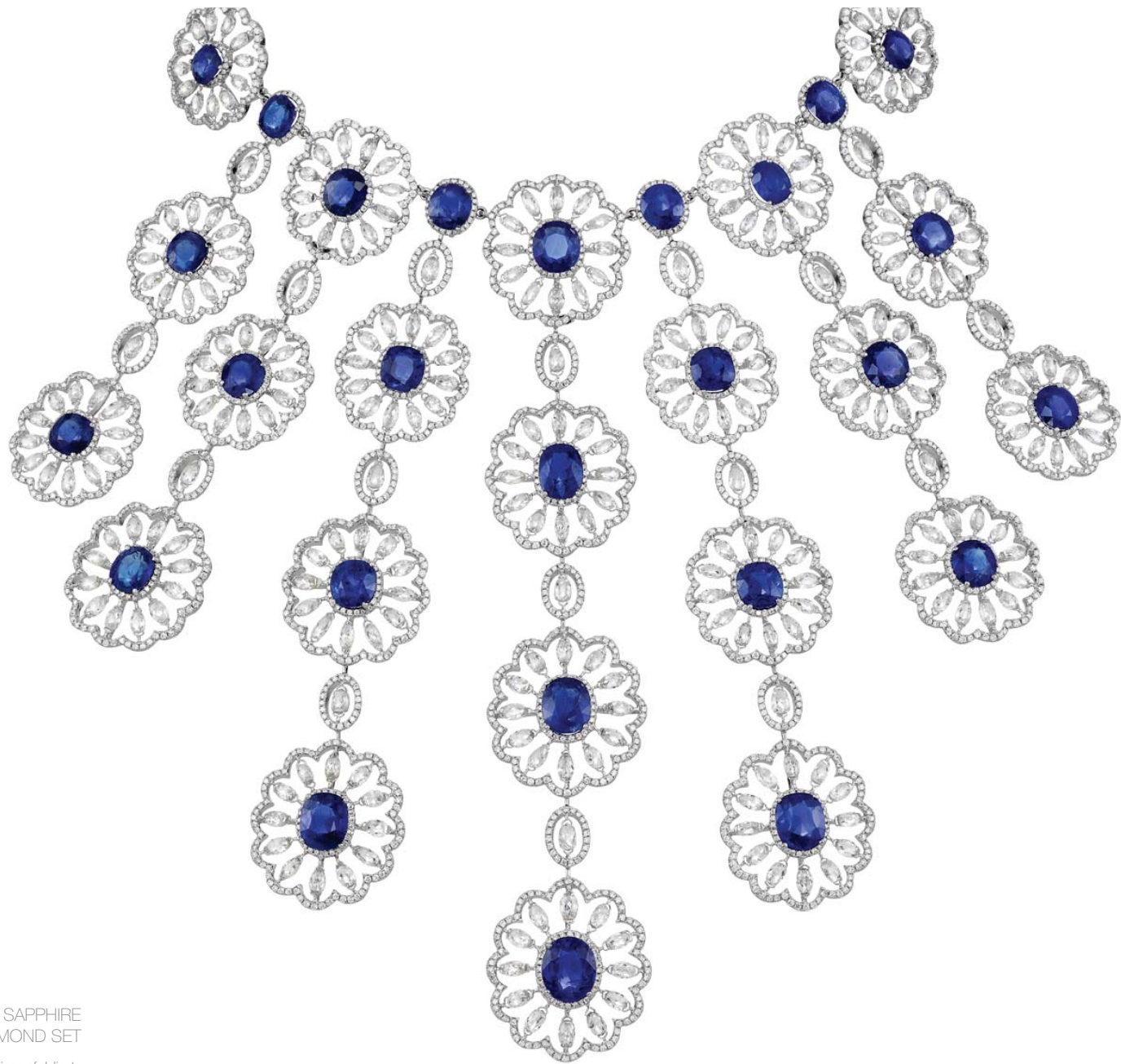
[819614-9001]

39









A MAGNIFICENT SAPPHIRE  
AND DIAMOND SET

Necklace designed as a graduated fringe of delicate openwork diamond flowers, blooming around unheated Burmese sapphire centres, to the similarly set necklace with diamond spacers. Earrings and ring en suite.

[939292-1001]



A FABULOUS GEM-SET  
NECKLACE

Of openwork designed, the black diamond  
floral motifs and ornamental festoons  
suspending delicate gem-set drops.

[B19528-1001]



#### A DELICATE DIAMOND NECKLACE

The pendant of fine diamond-set lace design within an undulating diamond surround, to the similarly set fine link chain.

[819508-1001]

42



#### AN EXQUISITE PAIR OF DIAMOND EARRINGS

The rose-cut diamond stylised flowers with delicate pavé-set diamond detail, to the similarly set lines and surmounts.

[849409-1001]

43





TWO CONTEMPORARY PAIRS  
OF GEM-SET EARRINGS

Of floral design, one set in luminous white opal the  
other in velvety amethyst with delicate diamond detail,  
to the similarly set lines and surmounts.

[849521-1001]

44



[849521-1002]

45



#### A STUNNING DIAMOND SET

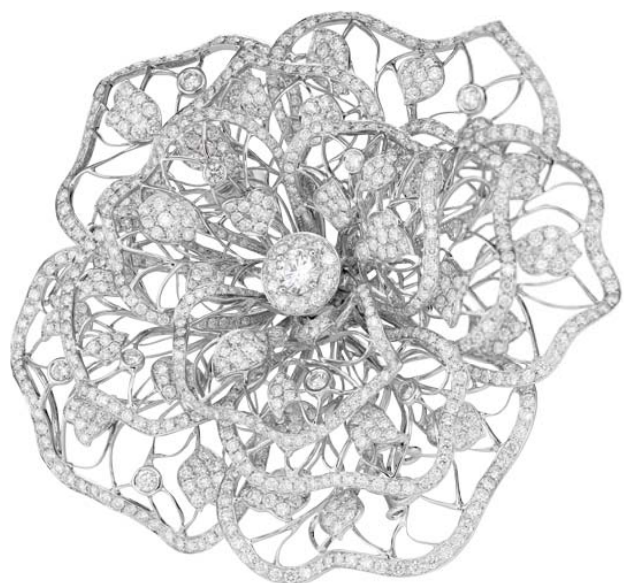
Ring of floral design with delicate scintillating diamond petals, to the round brilliant-cut diamond centre. Earrings en suite.

[829540-1010]

46

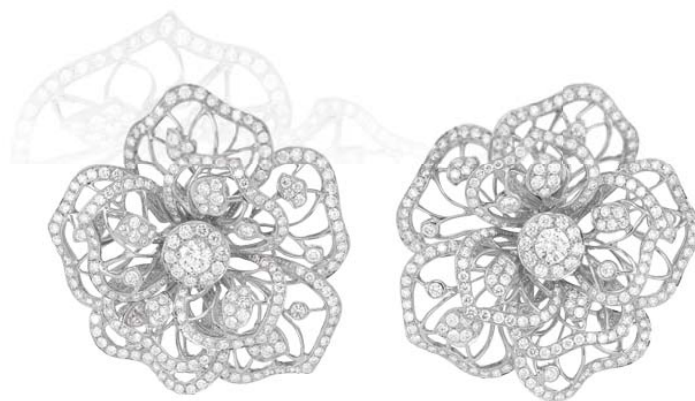


[849540-1001]



[909609-1001]

47



#### A SUMPTUOUS DIAMOND SET

Necklace designed as a garland of graduated diamond-set openwork flowers. Brooch, earrings and ring en suite.

[939609-1001]

48





A SUBLIME LADY'S  
DIAMOND WATCH

The circular pavé-set diamond dial set  
within pink sapphire and diamond floral  
sprays, to the white silk bracelet.

[134332-1001]



[849618-1001]

50



#### A PRETTY DIAMOND SET

Bracelet designed as a ribbon of diamond flowers set in marquise and pear-shaped diamonds. Earrings en suite.

[859620-1001]

51



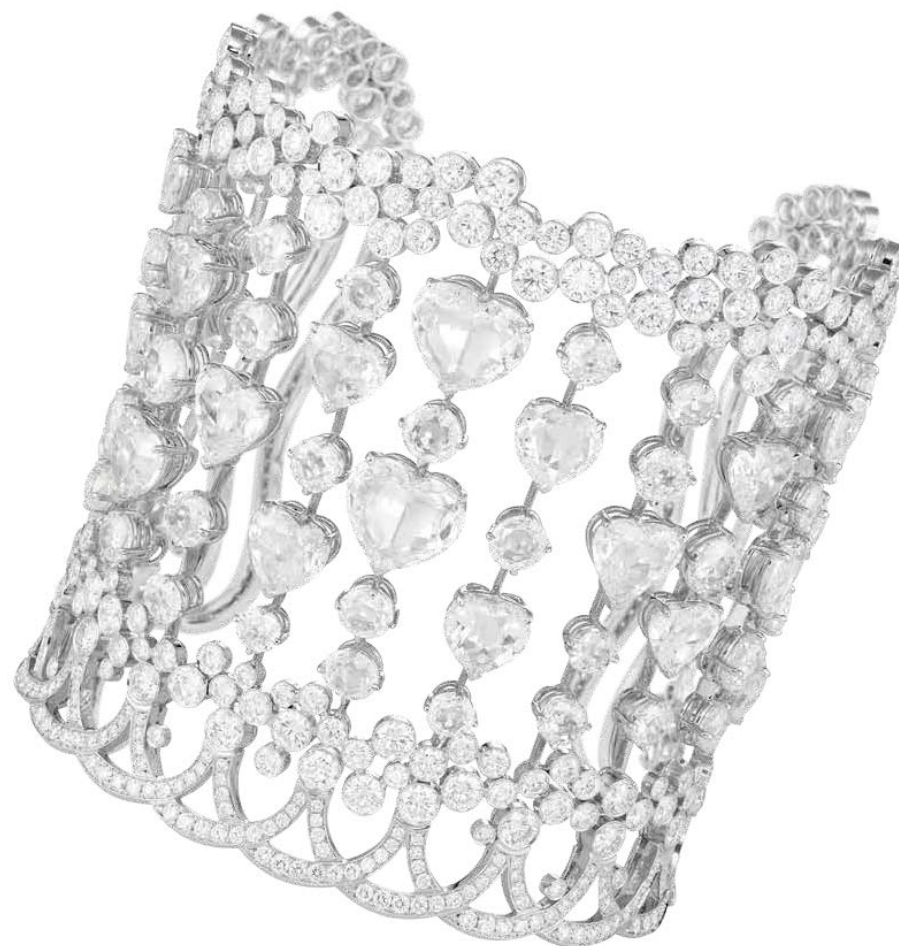
AN ENAMOURING RUBY  
AND DIAMOND SET

Necklace designed as a delicate pear-shaped  
diamond line, to the graduated heart-shaped ruby  
and diamond fringe. Earrings en suite.

[839577-1001]

[819577-1001]





AN ENCHANTING  
DIAMOND BRACELET

Of openwork design, the graduated  
heart-shaped diamond lines within  
delicate diamond-set lace borders.

[859593-1001]



[849583-9001]

54



[839275-9001]

55

# TWO EXQUISITE PAIRS OF RUBY AND YELLOW DIAMOND 'SITAR' EARRINGS

Each set with two oval-shaped rubies or two  
cushion-shaped fancy vivid yellow diamonds, to the pear-  
shaped diamond surround with matching fringe.



A GLAMOROUS PAIR OF EMEARALD  
AND DIAMOND EARRINGS

Each designed as clusters of tiny emerald  
flowers enveloped in pavé-set diamond leaves  
with yellow diamond bud detail.

[849608-9001]





AN EXCEPTIONAL EMERALD RING

Set with a rare emerald-cut Colombian emerald weighing 24.59 carats with no clarity enhancement, to the delicate pavé-set diamond band.

[820792-1001]

57



AN ELEGANT DIAMOND BRACELET

Comprising five lines of alternating emerald and cushion-shaped diamonds creating a sparkling ribbon around the wrist.

[859616-1001]

58



#### A STUNNING DIAMOND SET

Ring set with a round brilliant-cut diamond weighing 10.93 carats, D colour, Flawless clarity, to the pavé-set diamond band. Earrings en suite.

[820795-1001] [830427-1002]

59



#### A DAZZLING DIAMOND NECKLACE

Designed as a ribbon of graduated diamond-set twist motifs each with a scintillating brilliant-cut diamond centre.

[810376-1001]

60



#### A SUBLIME DIAMOND RING

Set with a marquise-cut diamond weighing 9.09 carats, D colour, IF clarity, to the pavé-set diamond band.

[820805-1001]

61



#### AN ELEGANT DIAMOND SET

The necklace designed as a delicate fringe of graduated marquise-cut diamonds.

[819522-1001]

62





CHOPARD'S RARE AND EXCEPTIONAL  
PAIR OF COLOMBIAN EMERALDS

A unique pair of pear-shaped Colombian emeralds  
weighing 33.34 and 35.33 carats, accompanied by certificate  
stating that these stones have no clarity enhancement.

[56621156-901]





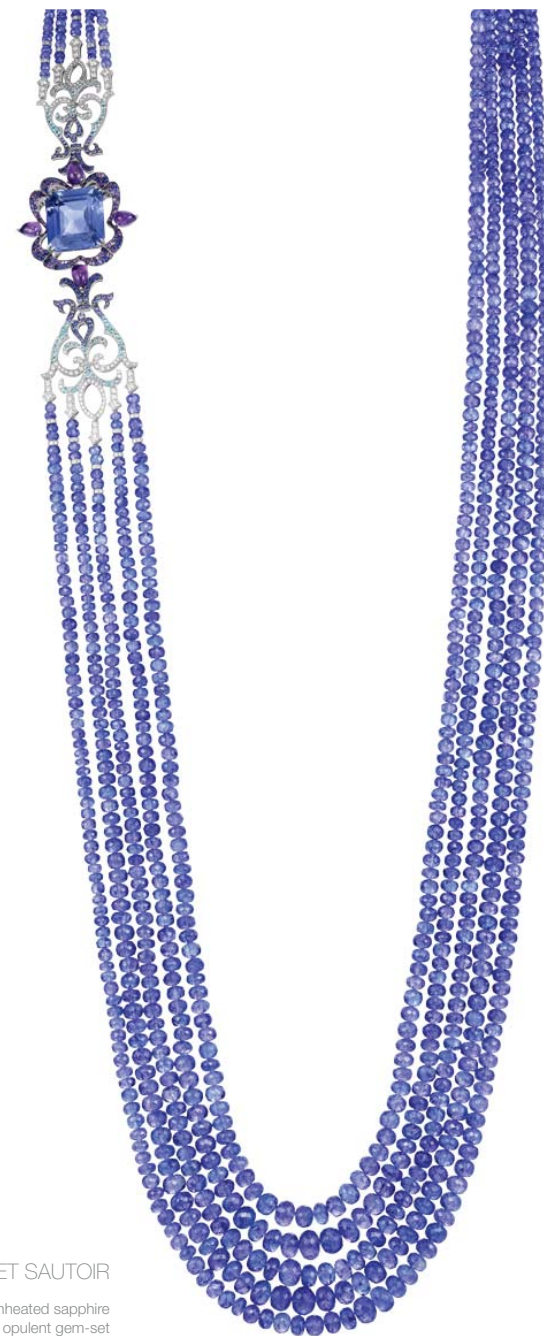


AN EXQUISITE SAPPHIRE  
AND DIAMOND RING

Set with a rare cushion-shaped Burmese unheated sapphire weighing 37.05 carats, to the undulating pavé-set diamond surround and sapphire band.

[820755-1009]

64



A GRACEFUL GEM-SET SAUTOIR

The emerald-cut Sri Lankan unheated sapphire weighing 37.01 carats within an opulent gem-set surround, to the tanzanite bead sautoir.

[819572-1001]

65

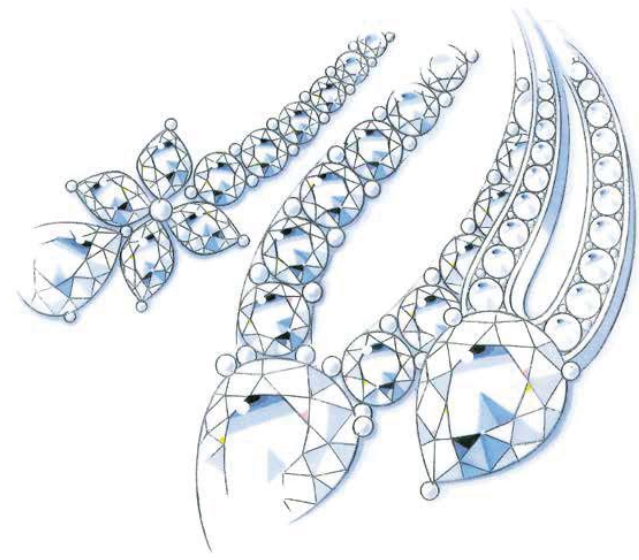
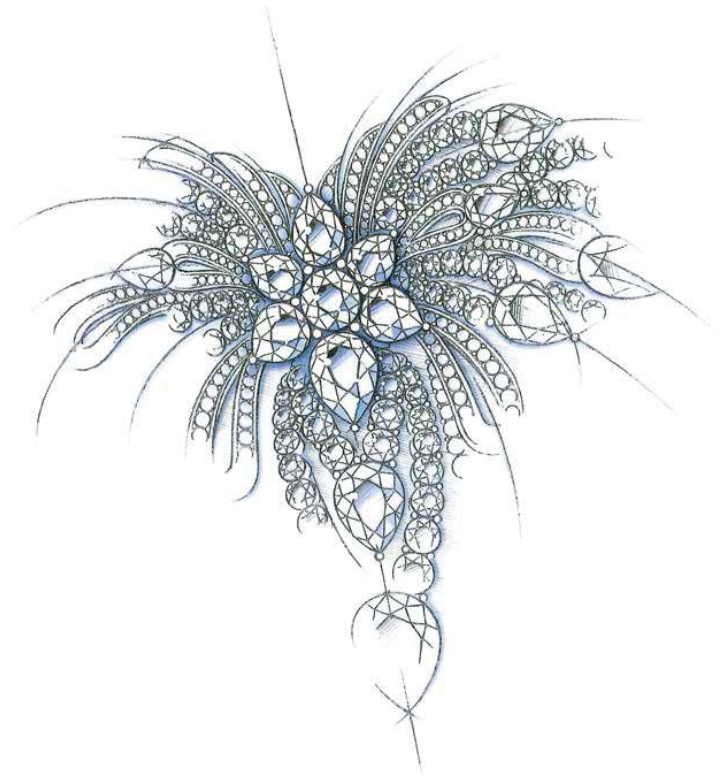




AN ALLURING SAPPHIRE  
AND DIAMOND NECKLACE

The rare heart-shaped royal-blue Sri Lankan  
sapphire weighing 60.03 carats, suspended from  
a delicate heart-shaped diamond necklace.

[B10411-1001]





#### THE OPULENT 'RIMERA' SET

The necklace designed as a garland of scintillating diamond foliage set *en tremblant* to the delicate pear-shaped diamond necklace. Earrings en suite.



[849516-1001]

[819516-1001]



94104-0591 Catalogue Red Carpet Collection No. 219

*Chopard*

© Le Petit-Fils de L.U.Chopard & Cie SA  
8, Rue de Veyrot 1217 Meyrin 2 Geneva  
Switzerland  
Tel. + 41 22 719 31 31 Fax + 41 22 719 31 35  
[www.chopard.com](http://www.chopard.com)

Printed in Italy, 2014

Since 2010 Chopard is a proud Member  
of the Responsible Jewellery Council (RJC),  
a not-for-profit organisation promoting ethical,  
social and environmental practices throughout  
the entire supply chain.



FESTIVAL DE CANNES  
**Official Partner**

